

股票简称：精工钢构

股票代码：600496



江苏精工钢构





					17.58	2011
6	30					
	1.80	2008	2009	2010		
					1.5	
	2008	2009	2010	2011		
	83,828.72		136,712.91	160,532.61		174,652.05
	2008	2010		28.49%		
	12,534.39	19,220.06		22,313.90		14,596.50
2008	2010			30.72%		
	2011	3	21	2011	4	6
		2011				
				2011	7	27
						[2011]1183
			8,250			97,084.50
	AA				AA+	

<http://www.szse.cn>

<http://www.scr.com.cn/>





2011

2012 3 28

2011

.....	8
.....	12
.....	12
.....	12
.....	13
.....	14
.....	15
.....	18
.....	20
.....	20
.....	20
.....	22
.....	22
.....	24
.....	25
.....	27
.....	27
.....	27
.....	30
.....	31
.....	37
.....	40
.....	43
.....	45
.....	58
.....	58
.....	58
.....	58

.....	58
.....	58
.....	59
.....	59
.....	59
.....	59
.....	68
.....	71
.....	76
.....	76
.....	76
.....	81
.....	83

11

11

		2011
		/
		2011
		2011
		2011
		2008 2009 2010 2011 1-6

ChangJiang & JingGong Steel Building (Group) Co.,LtdQb105167-jS6



2011 9 23 2011

10 11

2012 1 5 “ 2012 10 ”

7

2011

7

7

100

3

/

2012 3 22

2013 2015 3 22

3

2015 3 22

1

6

AA

AA+

()
()

1.50%

3

	2012	3	22			
	2012	3	22	2012	3	26

	2012 3 22
	2012 3 22 2012 3 26

159

16

021-51876399-2222

021-54452496

200233

1 /

13

168

1509

010-88576898

010-88576900

100044

2

1 A 8

1 A 8

010-83561051

010-83561238

100033

3

1

1088

2202

021-50155120 0769-22112950

021-550155082

201204

580 45-46

021-52341668

021-62676960

200041

61 4 1 2 3

1-1

19-20

0571-85800461

0571-85800465

310016

1

0575-88097266

0575-85595760

312071

7008

3

23

1006

010-66216006

010-66212002

100140

13

168

1509

010-88576898

010-88576900

100044

/

38920188000010954

528

021-68808888

021-68804868

200120

166

021-38874800

021-68870059





2011

AA

AA+

AA

AA+



	JingGong Holding Group Co.,Ltd
	32,000
	32,000
	2003 2 12
	www.jgsteelgroup.com

				51%	
	2010		2011		4-387
2011			2010		
	1,210,985.26			35.08%	
244,984.84				66.03%	2010
1,047,926.53				50.07%	66,368.92
	33.05%	2011	6	30	
1,306,499.58			264,952.00		2011
585,351.33			21,668.20		4
	37.91%	66.34%	44.31%	67.00%	
	2011	6	30		692,436.10
					197,399.17
	2011	6	30		
					173,456.65
				65.47%	
243,456.65					91.89%

(“ ”
700,000,000.00

5 5

/

1

2

30

1

2

“

”

“

”

ChangJiang & JingGong Steel Building (Group) Co., Ltd.

58,050

2002 6 5

600496

159

16

340000000022295

200233

021-51876399-2222

021-54452496

www.600496.com

www.sse.com.cn

www.600496.com

96.99%

340000000022295

2002 2 7

[2002]22

2002 5 22

4,000

3.61

/

11,000

4,000

2002 6 5

2003 11 18

[2003]375

6,788.832

6,109.9488

2004 3 9 4 7

2004 39

178.173

6,288.1218

57.165%

2004 3

49%

60%

2004

91.05%

2004

“

” “

()

” 2004 11 29

2005 3

51%

95%

90%

2005 11 10

2005 11 2

[2005]193

11,000

6,080

4,920

2006 5 14 2005

2005

2005

10

1.00

10 5

2006 6 7

2006 6 9

11,000

16,500

2006

[2006]68

6,500

23,000

2008 5 20 2007

2007

2007

10

2

3

0.3

34,500

2009

[2009]1079

4,200

38,700

2011 3 30 2010

2010

2010

10

5

58,050

2011 6 30

58,050

58,050.00

2011 3 21

2011 4 6

2011

2011

2011

2011 7 27

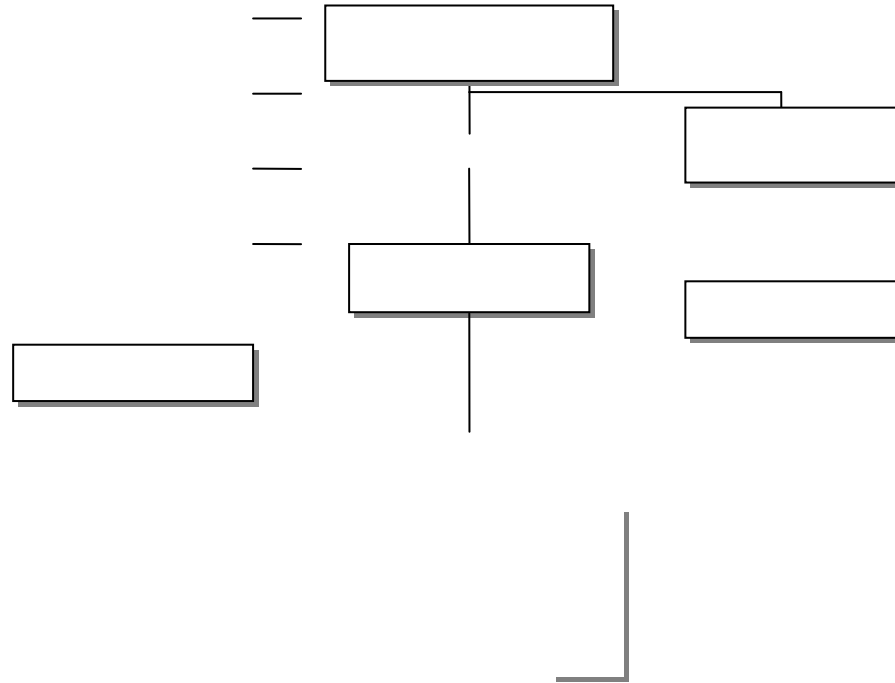
[2011]1183

8,250

97,084.50



2011 6 30



2011 6 30

长江精工钢结构（集团）股份有限公司

长江紧固件

上海拜特

浙江精工

湖北楚天

浙江空间钢

城建精工

2011 6 30

				2011 6 30	2011 6 30	2011	2011	
	1999.3.29			5,000	263,055.39	69,334.99	129,056.71	11,329.94
	2002.1.9			5,000	5,174.21	4,066.97	1.32	-160.00
	2003.9.8			5,000	4,463.72	4,463.62	-	-1.23
	2004.6.16			550	18,200.63	7,637.01	14,340.12	24.18
	2004.6.21			900	47,747.09	18,822.29	46,073.46	3,136.02
	2004.8.4			1,500	4,407.65	1,353.18	1,555.73	-32.89
	2007.2.9			8,000	19,867.99	7,192.85	8,846.05	-159.52
	2008.3.14			50	70,526.02	61,442.49	-	-3.34
	2009.5.8			2,910	2,161.21	1,021.69	815.70	432.32

	1994.5.6			1,100	70,798.89	20,024.70	48,524.65	2,359.50
	1995.8.7			1,050	6,797.28	6,767.47	-	-
	1995.9.11			1,500	11,728.41	11,682.46	-	-0.48
	2004.3.24			1	3,890.56	3,868.14	-	375.49
	2006.1.9			500	28,696.45	775.35	11,565.69	-712.11
	2006.4.18			1	6,451.09	5,735.38	-	2,219.34
	2008.1			10	642.67	-2,691.74	89.69	-218.69
	2010.12			10	43.38	-78.55	-	-57.46
	2004.12.28			500	10,653.00	3,279.70	-	-
	2005.6.7			500	36,940.74	18,239.21	-	-
	2004.7.27			220	1,773.15	1,553.93	-	-

	2009.11.2 3		1,000	981.41	976.13	-	-
--	----------------	--	-------	--------	--------	---	---

1

2011 6 30

195,940,729

33.75%

	JingGong Holding Group Co.,Ltd
	32,000
	32,000
	2003 2 12
	www.jgsteelgroup.com

2003 2 12

3306211011208

1

2003 5

5,000

15,000

6

17,000

32,000

2005 3 20

“

”

“

”

2011 9

“

”

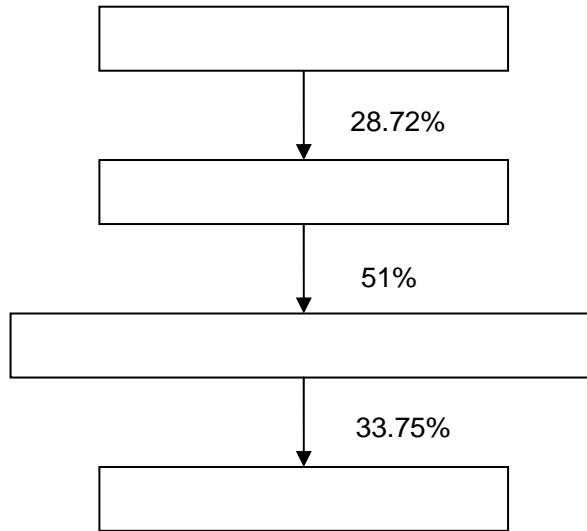
“

”

2011 6 30

3.2

51%



28.72%

2011 6 30

30%

10%

2

	112 18
	28,500
	28,500
	1996 1 23
	330621000010666



		55	
		21	
		55	
		0	
		46	
		0	
		5	
		5	
		5	
		0	
		27	
		25	
		48	
		55	
		56	
		32	
		40	
		12.5	

2011 6 30

2010

		40	10.15			
		40	10.15			
		15	10.15			
		20	10.15			

10 0.5 5 2011 7 8
 2011
 1.5 6.73

2010	2010	2.01 12.5%
2011	2011	2.27 12.5%
2012	2012	2.97 12.5%

2011 6 30

--	--	--	--

1

0

P

¶

10			
11			
12			
13			
14			
15			
16			
17			
18			

SECRET

1

2

3

4

3

	10,388		/
	1.1		/
	1,137		/
			/
			/

			/
			/
	30		
	BAPV		
			/
		60	
			/
	8,800		

4

2008	2010	55.62	49.00	64.50
			5000	
2008	2010	51%	54%	59%

E

—

1

1

H

1779

Coalbrookdale

1889

324m

—

—

420m

115m

—“

”

50

60 70

90

2

5

A

/		
1997	1996 2010	
1998		
1999	“ ”	“ ”
	2010	
2003		2010 6%
2005	10	
2007	“ ”	“ ”
		2010 10%
2011	“ ”	
2005	2005	“
2007	2007	”

2006		

a

2009

--	--	--

D

2012

2013

E

/

F

“ ”

2014 20 2016 31

3

2011 8 “ ”

A ,

B “ ”

10%

C

D



2009 MBMA
NCI Nucor BlueScope

2

1

KALZIP

BEMO

“ ”

“ + ”

2

A

20

B

“ ”

T3

4		4		4	
5		5		5	

2

2010

“ ”

3

“ ”

4

“ ”

2011 6 30

62

4

2008 “Q460

” “

”

2009

“

”

2010

“

”

“

”

2010

2

“

”

509

628

982

ISO9001 2008

GB/T50430 2007

ISO14001 2004

GB/T28001 2001

CMA

CNAS

1	500 ERP	
2	2010 QC	
3	2009 QC	
4	2007	

5	QC	2010	
6	2009		
7	QC		
8	QC		

3

40

EMBA 2011

6 30 4,947 6 60
 680 518 710
 132
 6 57 10
 1

“

” “

”

2010 “ ”

4

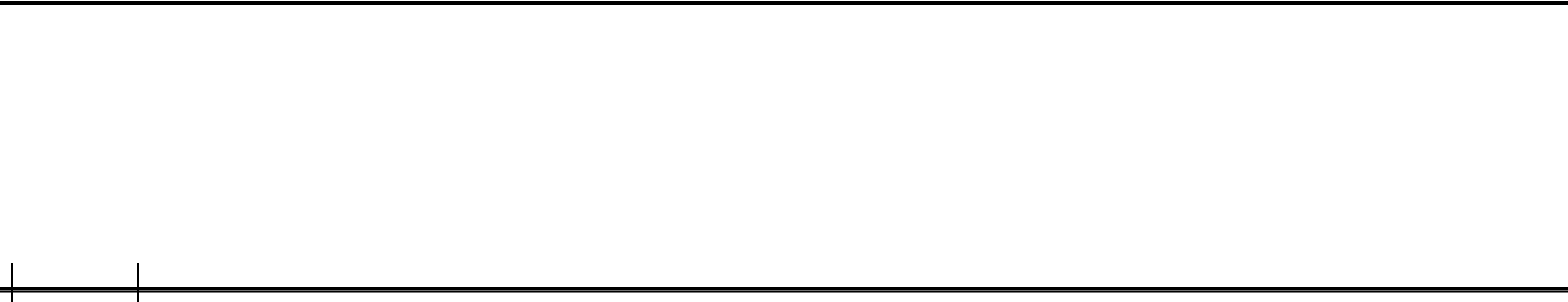
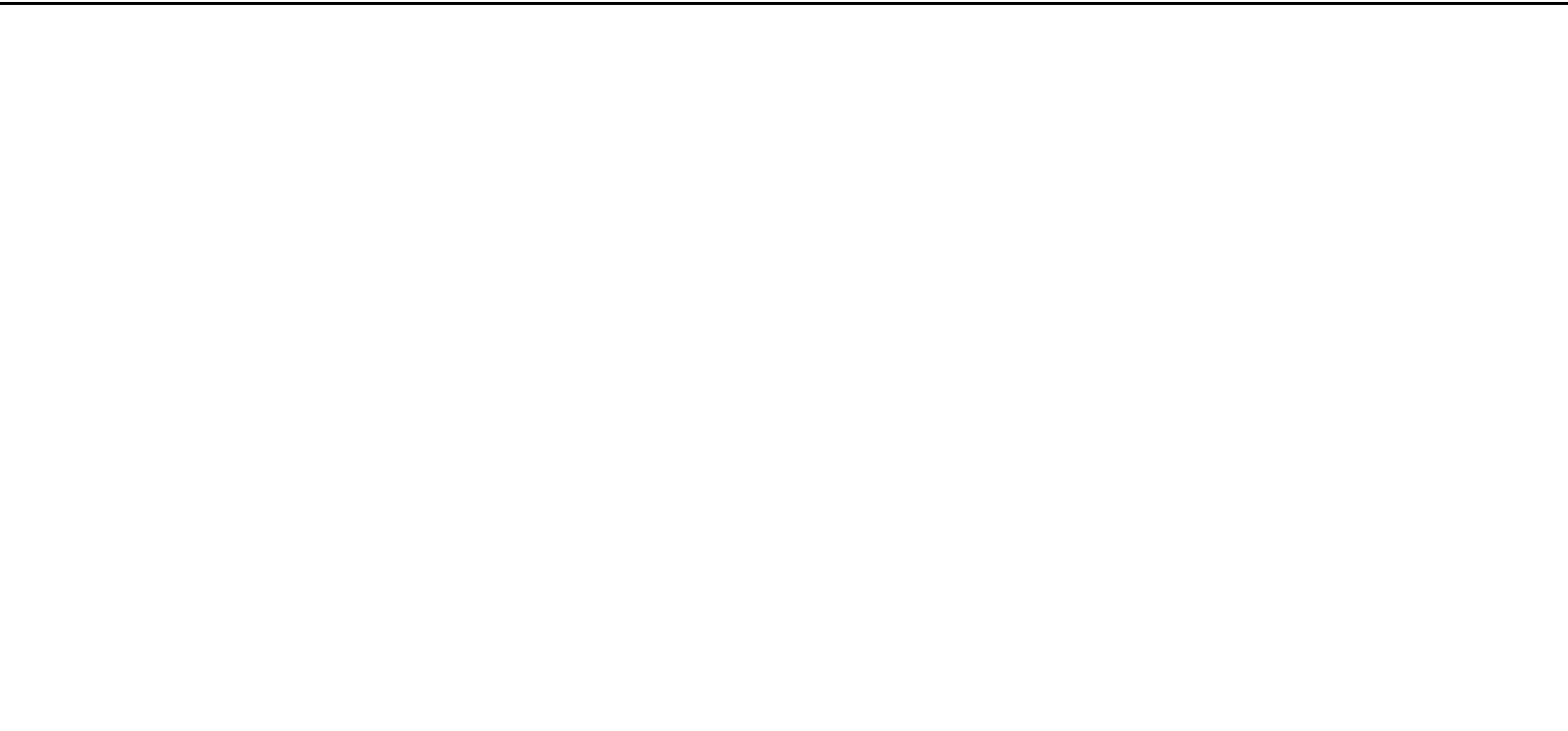
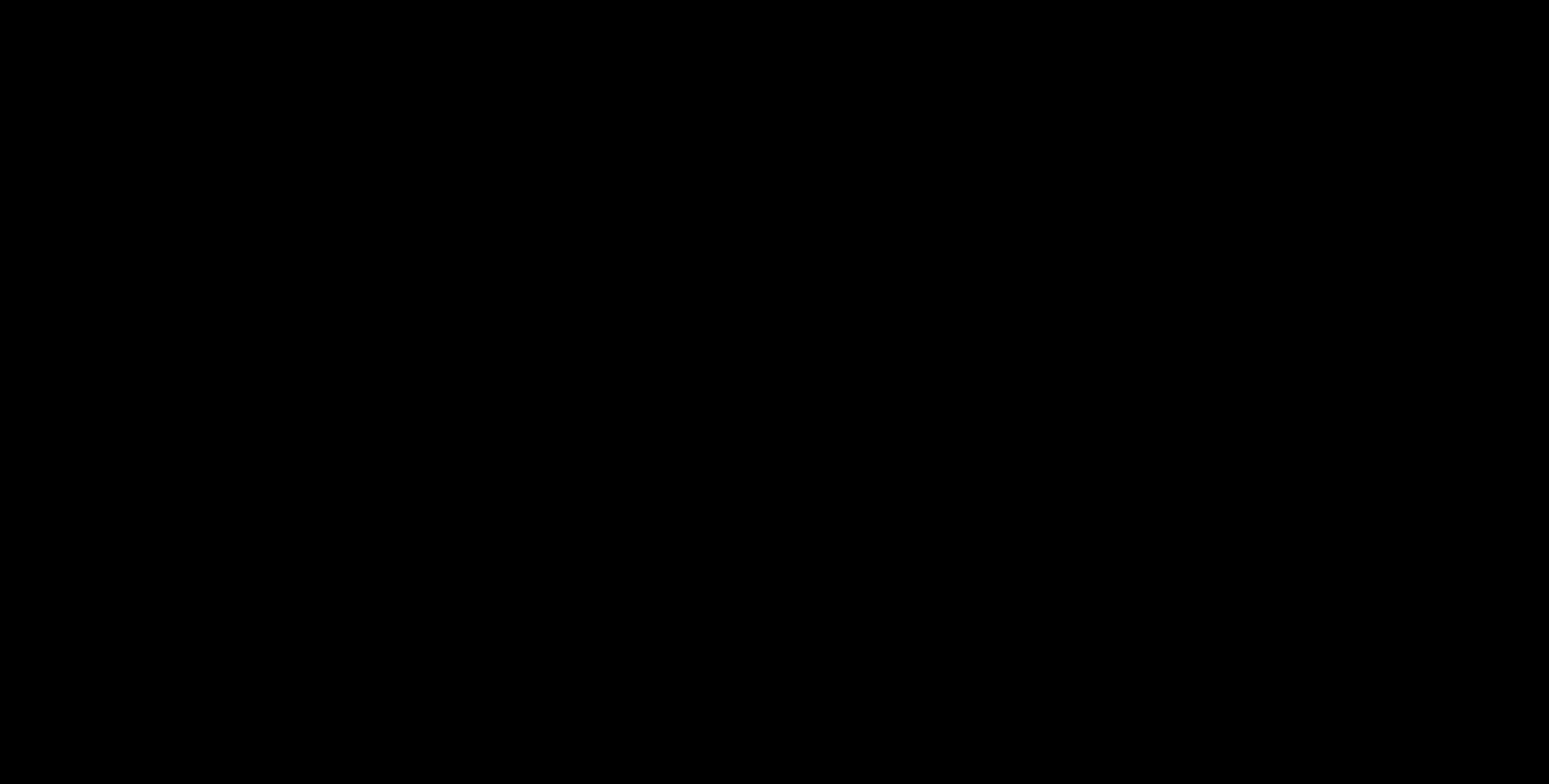


2011 6 30
323,772.36 160,982.32
162,790.04
6 ê {Ü¡çÃõ 5"Y³ Ü



2008 2009 2010 2011 6 30
6

2008 2009 2010 2011 6
30 6 ,
2008 2009
2010
2009 10312 2010 10428
2011 10681



	2011 6 30	2010 12 31	2009 12 31	2008 12 31
	619,000,000.00	467,877,235.18	579,376,951.11	959,900,000.00
	-	-	-	-
	475,994,908.90	348,621,044.48	379,720,608.00	296,467,112.46
	1,018,667,139.82	1,040,029,636.80	994,997,223.19	874,706,749.75
	549,514,935.23	545,811,206.79	489,605,929.87	611,456,647.97
	29,149,997.80	36,849,244.46	36,098,487.88	29,590,471.04
	102,156,652.45	102,584,326.14	72,620,903.68	54,088,432.14
	700,785.20	672,742.21	1,202,256.96	2,356,368.56
	265,552.21	-	381,016.36	2,972,171.36
	100,584,202.95	80,114,555.33	80,336,880.36	106,542,781.81
	41,418,240.00	-	-	60,000,000.00
	-	-	-	-
	2,937,452,414.56	2,622,559,991.39	2,634,340,257.41	2,998,080,735.09
	-			
	257,929,621.50	8,375,929.08	202,290,908.00	48,158,101.00
	-	-	-	-
	-	-	-	-
	-	-	-	-
	-	-	-	-
	-	-	-	-
	-	-	-	-
	257,929,621.50	8,375,929.08	202,290,908.00	48,158,101.00
	3,195,382,036.06	2,630,935,920.47	2,836,631,165.41	3,046,238,836.09
	580,500,000.00	387,000,000.00	387,000,000.00	345,000,000.00
	379,176,970.09	558,035,770.09	530,815,926.93	212,019,540.52
	-	-	-	-
	-	-	-	-
	66,558,949.15	66,558,949.15	57,946,157.53	49,692,151.08
	-	-	-	-
	723,898,785.66	597,283,762.08	394,367,547.04	234,570,971.47
	-3,614,203.50	-3,552,430.65	-3,000,578.13	-2,995,417.36
	1,746,520,501.40	1,605,326,050.67	1,367,129,053.37	838,287,245.71
	11,283,104.24	12,343,369.01	16,296,994.49	33,364,828.84
	1,757,803,605.64	1,617,669,419.68	1,383,426,047.86	871,652,074.55
	4,953,185,641.70	4,248,605,340.15	4,220,057,213.27	3,917,890,910.64

	2011	2010	2009	2008
	2,593,641,446.97	5,313,048,737.74	4,509,837,470.39	4,587,715,136.04
	2,593,641,446.97	5,313,048,737.74	4,509,837,470.39	4,587,715,136.04
	2,422,210,211.41	5,085,416,958.87	4,274,214,815.90	4,461,458,111.94
	2,215,864,310.56	4,681,362,518.82	3,879,524,719.29	4,048,073,101.43
	30,768,845.66	56,224,756.16	44,858,585.82	29,102,346.74
	31,887,905.01	87,088,893.49	87,922,212.58	121,413,816.03
	112,147,180.15	188,776,284.10	179,066,491.17	187,693,819.37
	24,624,860.71	35,827,635.61	61,183,076.17	73,403,228.25
	6,917,109.32	36,136,870.69	21,659,730.87	1,771,800.12
“_”		-	-	-
“_”	1,917,919.44	15,545,227.76	14,555,017.37	20,902,652.90
	208,771.76	-	-	-
“_”	173,349,155.00	243,177,006.63	250,177,671.86	147,159,677.00
	1,487,129.17	11,075,996.93	10,795,852.07	15,107,078.38
	885,633.58	5,805,115.12	5,955,183.90	6,003,279.14
	424,841.20	1,482,668.44	1,051,081.29	3,910,915.27
“_”	173,950,650.59	248,447,888.44	255,018,340.03	156,263,476.24
	28,780,339.57	29,082,329.95	58,953,353.88	26,284,266.17
“_”	145,170,311.02	219,365,558.49	196,064,986.15	129,979,210.07
		-131,742.07	-290,767.73	-566,240.64
	145,965,023.58	223,139,006.66	192,200,582.02	125,343,902.89
	-794,712.56	-3,773,448.17	3,864,404.13	4,635,307.18
	0.25	0.58	0.55	0.36
	0.25	0.58	0.55	0.36
	-61,772.85	-551,852.52	-5,160.77	-1,225,803.47
	145,108,538.17	218,813,705.97	196,059,825.38	128,753,406.60
	145,903,250.73	222,587,154.14	192,195,421.25	124,118,099.42
	-794,712.56	-3,773,448.17	3,864,404.13	4,635,307.18

	2011	2010	2009	2008
	2,919,215,273.91	4,948,639,654.09	4,158,781,405.58	5,807,065,795.35
		22,751,061.34	6,416,411.96	13,421,246.72
	38,722,147.29	122,392,343.28	36,219,854.91	32,675,778.78
	2,957,937,421.20	5,093,783,058.71	4,201,417,672.45	5,853,162,820.85
	2,399,499,836.58	4,370,090,593.76	3,441,040,997.15	5,034,854,315.45
	121,723,155.73	264,082,640.44	230,419,788.71	233,801,358.63
	111,109,946.79	158,652,441.31	139,779,459.07	131,961,712.75
	160,248,909.69	186,737,220.78	198,543,898.50	288,713,279.59

2,792,581,848.79220.7.

	681,185,080.00	855,144,580.02	2,042,201,969.04	1,498,532,049.87
	299,090,382.76	932,432,628.87	1,989,067,193.00	1,369,157,356.03
	42,061,822.19	42,897,356.61	101,205,545.74	120,336,077.78
		594,177.31	3,820,555.00	2,610,382.39
		-	13,126,646.00	-

	2011 6 30	2010 12 31	2009 12 31	2008 12 31
	288,000,000.00	215,000,000.00	140,000,000.00	230,000,000.00
		-	-	-
	268,157,903.42	111,352,059.20	5,800,000.00	-
	133,730,098.76	157,438,505.20	172,658,408.83	141,811,587.29
	4,105,836.41	35,167,250.65	8,300,418.83	36,033,521.46
	3,908,046.67	4,440,911.11	3,876,298.41	1,248,555.16
	5,604,237.41	6,680,423.46	7,930,849.69	6,000,234.56
	469,848.37	302,659.06	201,598.25	556,485.48
		-	-	-
	84,618,839.26	16,214,826.15	199,836,428.40	134,189,336.41
		-	-	-
		-	-	-
	788,594,810.30	546,596,634.83	538,604,002.41	549,839,720.36
	1,963,635.00	1,963,635.00	2,290,908.00	2,618,181.00
		-	-	-
		-	-	-
		-	-	-
		-	-	-
		-	-	-
		-	-	-
	1,963,635.00	1,963,635.00	2,290,908.00	2,618,181.00
	790,558,445.30	548,560,269.83	540,894,910.41	552,457,901.36
	580,500,000.00	387,000,000.00	387,000,000.00	345,000,000.00
	377,471,151.86	556,329,951.86	532,255,124.48	224,570,874.28
		-	-	-
		-	-	-
	41,555,863.00	42,989,592.77	32,943,071.38	24,689,064.93
		-	-	-
	274,767,512.00	176,561,574.52	110,656,449.90	60,520,391.87
	1,274,294,526.86	1,162,881,119.15	1,062,854,645.76	654,780,331.08
	2,064,852,972.16	1,711,441,388.98	1,603,749,556.17	1,207,238,232.44

2

	2011	2010	2009	2008
	334,622,121.12	508,163,627.24	575,716,616.52	435,634,361.40
	299,624,091.52	467,564,482.94	513,550,883.21	394,109,255.41
	1,955,581.00	3,952,343.65	4,459,566.56	3,092,470.56
	2,805,048.15	5,852,137.93	4,957,781.83	4,059,980.50
	29,252,252.00	29,896,734.05	30,823,989.97	31,565,712.43
	12,088,144.88	8,008,892.28	17,425,742.06	23,043,539.44
	3,837,244.42	5,031,687.37	2,990,772.09	206,193.13
“ ”		-	-	-
“_”	132,205,639.63	95,028,700.83	81,113,987.83	84,205,589.71
	208,771.76	-	-	-
“-”	117,265,398.78	82,886,049.85	82,621,868.63	63,762,799.64
	174,778.82	1,976,933.40	1,961,137.58	1,122,769.38
	459,826.78	622,326.01	450,655.04	226,110.20
		231,996.12	142,655.04	-65,167.14
“-”	116,980,350.82	84,240,657.24	84,132,351.17	64,659,458.82
	-575,586.66	-1,887,259.00	1,592,286.69	532,785.28
“-”	117,555,937.48	86,127,916.24	82,540,064.48	64,126,673.54
		-	-	-
	117,555,937.48	86,127,916.24	82,540,064.48	64,126,673.54

3

	2011	2010	2009	2008
	346,319,617.03	447,553,918.30	618,086,260.57	449,378,148.71
		-	821,893.73	-
	70,400,443.13	10,252,189.95	154,820,983.14	127,872,686.38
	416,720,060.16	457,806,108.25	773,729,137.44	577,250,835.09
	224,392,575.65	353,993,258.92	542,323,472.45	320,814,578.91
	20,047,663.38	35,281,243.40	31,704,888.96	27,817,531.97
	9,038,093.97	12,423,523.89	15,341,926.46	8,151,648.14
	327,558,626.50	207,944,730.21	126,019,115.30	90,708,738.56

	581,036,959.50	609,642,756.42	715,389,403.17	447,492,497.58
	-164,316,899.34	-151,836,648.17	58,339,734.27	129,758,337.51
		-	51,599,440.00	-
	120,042,111.53	92,061,677.18	66,558,970.46	66,188,380.64
	563,270.53	206,381.54	447,341.10	10,106,995.21
	66,520,100.00	121,165,000.00	-	143,383,992.60
		-	-	-
	187,125,482.06	213,433,058.72	118,605,751.56	219,679,368.45
	1,604,543.35	4,238,110.07	10,884,742.70	32,151,622.81
		54,000,000.00	358,175,017.93	199,263,736.94
	81,750,000.00	-	-	124,745,200.00
		-	-	-
	83,354,543.35	58,238,110.07	369,059,760.63	356,160,559.75
	103,770,938.71	155,194,948.65	-250,454,009.07	-136,481,191.30
		-	339,525,017.93	-
	153,000,000.00	215,000,000.00	330,000,000.00	230,000,000.00
		-	-	-
	153,000,000.00	215,000,000.00	669,525,017.93	230,000,000.00
	80,000,000.00	140,327,273.00	420,327,273.00	244,386,873.00
	32,781,353.11	20,088,377.77	43,595,516.19	33,697,860.82
		-	-	-
	112,781,353.11	160,415,650.77	463,922,789.19	278,084,733.82
	40,218,646.89	54,584,349.23	205,602,228.74	-48,084,733.82
		-	-	-
	-20,327,313.74	57,942,649.71	13,487,953.94	-54,807,587.61
	74,669,672.78	16,727,023.07	3,239,069.13	58,046,656.74
	54,342,359.04	74,669,672.78	16,727,023.07	3,239,069.13

2011 1-6

2011 3

15.36%

2011 5

2011 6

100%

1			
		2	100%
		500	100%
		228	100%
		1000	100%
)		500	100%
		800	100%
2			
3			
	-	-	-

2010

2010

100%

2010 11

75% 25%

6

2010 12 31

55%

55%

100%

6

2010 12

31

55%

55%

1			
		500	100%
		10	100%
2			
		800	45%
		10,000	45%
3			
	-	-	-

2009

2009

100%

1			
		2,910	100%
2			
	-	-	-
3			
	-	-	-

2008

2008

4

100%

70%

2008

100%

100%

75%

2008

60%

2009 6

40%

2008

2008

25%

75%

100%

73%

88%

15%

60%

85%

25%

1			
		50	100%
		10,000	100%
		1,500	100%
		1	100%
		1	100%
		-	70%
2			
		5,000	100%
		228	75%
		10,000	100%
		20	100%
3			
		800	100%
		800	88%
		500	100%

	2011.6.30	2010.12.31	2009.12.31	2008.12.31
	362,103.95	325,361.42	302,977.13	282,208.09
	133,214.61	99,499.11	119,028.60	109,581.00
	495,318.56	424,860.53	422,005.72	391,789.09
	293,745.24	262,256.00	263,434.03	299,808.07
	25,792.96	837.59	20,229.09	4,815.81
	319,538.20	263,093.59	283,663.12	304,623.88
	174,652.05	160,532.61	136,712.91	83,828.72
	1,128.31	1,234.34	1,629.70	3,336.48
	175,780.36	161,766.94	138,342.60	87,165.21

2

	2011.6.30	2010.12.31	2009.12.31	2008.12.31
	87,840.66	54,776.32	39,580.20	33,043.81
	118,644.64	116,367.82	120,794.75	87,680.01
	206,485.30	171,144.14	160,374.96	120,723.82
	78,859.48	54,659.67	53,860.40	54,983.97
	196.36	196.36	229.09	261.81
	79,055.84	54,856.03	54,089.49	55,245.79

	0.25	0.58	0.55	0.36

2

	2011.6.30	2010.12.31	2009.12.31	2008.12.31
%	38.29	32.05	33.73	45.76
	1.11	1.00	0.73	0.60
	0.88	0.58	0.37	0.33
	2.20	2.00	1.83	1.13
	2011	2010	2009	2008
	2.38	4.65	5.59	3.65
	1.46	2.20	2.97	4.01
	10.9	11.57	5.17	6.74
%	9.23	7.41	7.77	9.79
	-0.28	-0.39	0.15	0.38
	-0.04	0.15	0.03	-0.16
	0.20	0.22	0.24	0.35

1 = /

2 = - /

3 = /

4 = /

5 = /

6 = /

7 = + /

8 = /

9 = /

10 = /

11 = /

9 —

2010

1

	2011	2010	2009	2008
	174,652.05	160,532.61	136,712.91	83,828.72
	14,596.50	22,313.90	19,220.06	12,534.39
%	8.36	13.90	14.06	14.95
%	8.71	15.13	19.86	15.69
	280.38	1,623.02	1,733.88	2,545.57
	14,316.12	20,690.88	17,486.17	9,988.82
%	8.20	12.89	12.79	11.92
%	8.54	14.03	18.07	12.50

2009

33,952.50

2009

2

	2011	2010	2009	2008

3 / + ×
+ ×
÷
÷
4 [+ +
× 1] ÷ + ×
+ ×
÷ ×
÷ +

1 —

2008

	-, +	2011	2010	2009	2008
1		240.28	1,225.16	1,587.74	1,813.50
2		49.15	694.19	631.40	973.85
3		-	-	-333.56	-26.12
4		-	-13.17	-29.08	-75.50
5		-	-	-	161.10
6		39.84	-102.35	165.32	355.08
7		-	-	-	-1.34
8		-48.93	-176.66	-297.18	-533.79
9		0.03	-4.15	9.24	-121.21
		280.38	1,623.02	1,733.88	2,545.57

2011

7

2011

3

3

1		2011.09.22-2012.9.21	6.89%	2,000
2		2011.09.02-2012.9.01	7.22%	3,000
3		2011.04.29-2012.04.25	6.31%	2,000
4		2011.05.04-2012.04.25	6.31%	1,000
5		2011.04.02-2012.03.28	6.31%	1,000
6		2011.07.25-2012.01.25	6.71%	4,000
7		2010.12.01-2011.11.30	5.56%	3,500
8		2011.01.01-2011.12.31	5.86%	1,000





30%

85%

95%~98%

1~2



A

B

C

D

E

F

G

1 2

2

2

3

3-5

“

”

“ ”

7

3

2011 6 30

20.67%

8.07%

2011 6 30

3

	66,041.82	20.67%	44,167.26	12.28%
	25,792.96	8.07%	87,667.52	24.38%

	28,800.00	36.43%	23,425.44	33.37%
	196.36	0.25%	70196.36	48.86%

2008 2010

2011

159

16

021-51876399-2222

021-54452496

200233

www.600496.com

168

1509

010-88576898

010-88576900

www.ghzq.com.cn

<http://www.sse.com.cn>